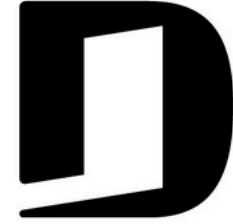




DRUMMOND
HOUSE PLANS  **YOUR
BEST
PLAN**

DRUMMOND HOUSE PLANS



YOUR
BEST
PLAN



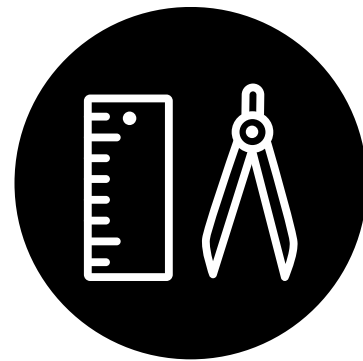
**READY-TO-BUILD
& CUSTOMIZABLE**

1500 PLANS



**RENOVATION &
ENLARGEMENT**

PLANS



**CUSTOM
PLANS**



**INTERIOR
DESIGN**



1-800-567-5267

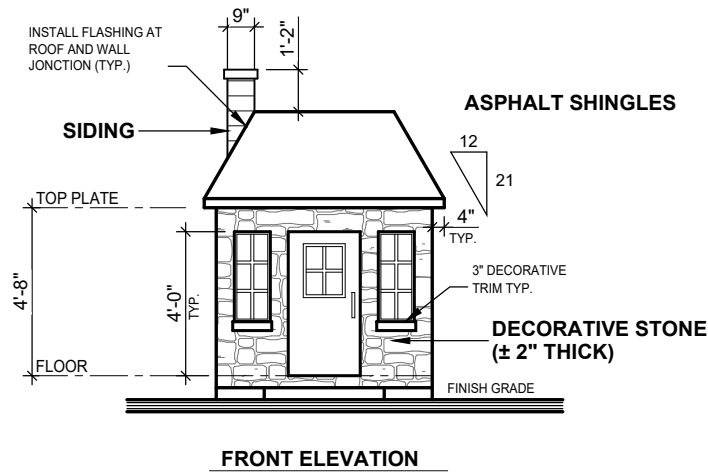


INFO@DRUMMONDHOUSEPLANS.COM

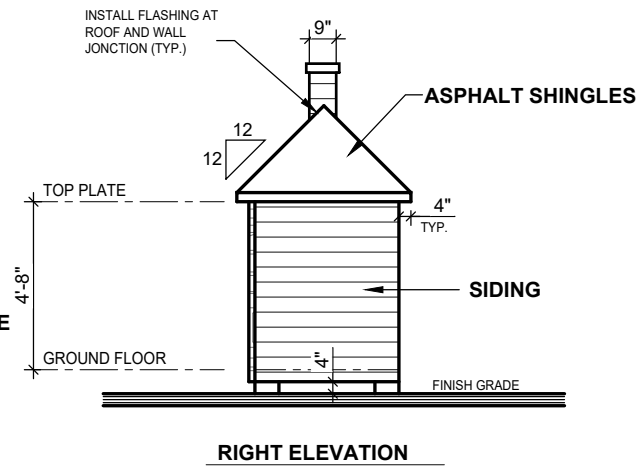


WWW.DRUMMONDHOUSEPLANS.COM

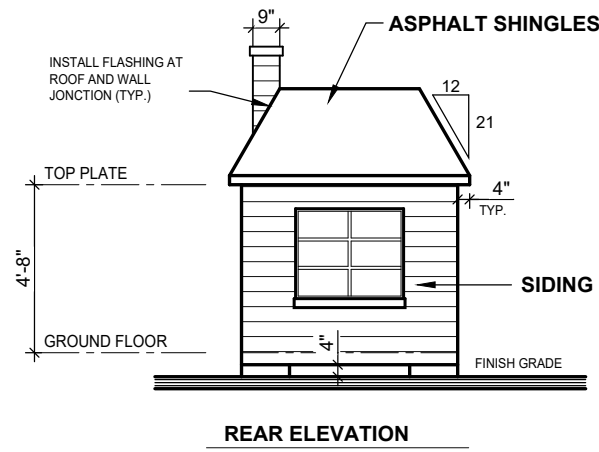
DRUMMOND HOUSE PLANS



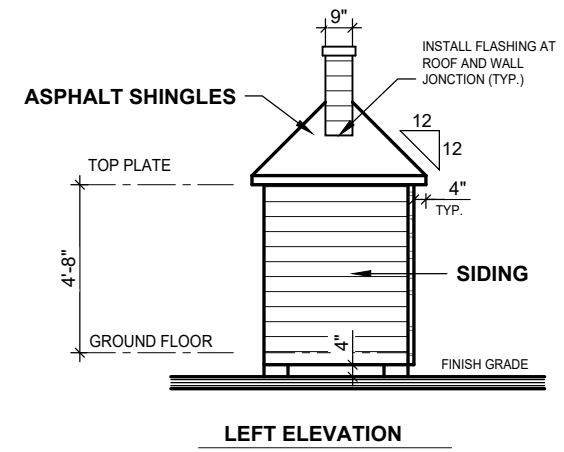
FRONT ELEVATION



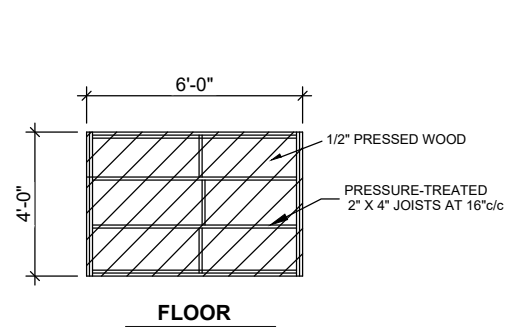
RIGHT ELEVATION



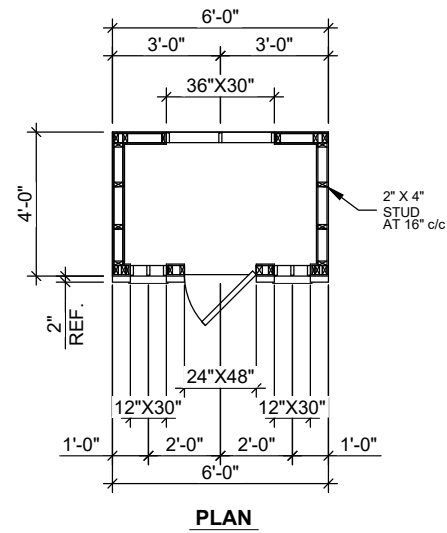
REAR ELEVATION



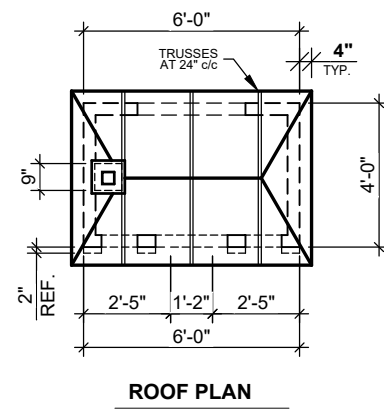
LEFT ELEVATION



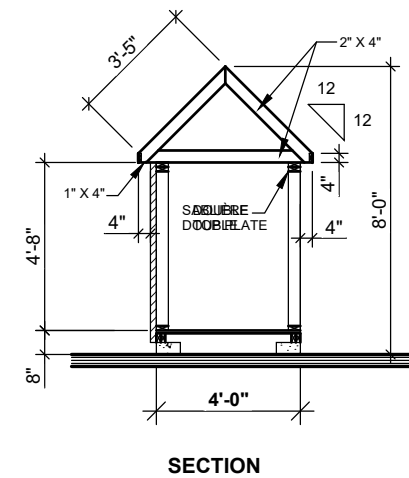
FLOOR



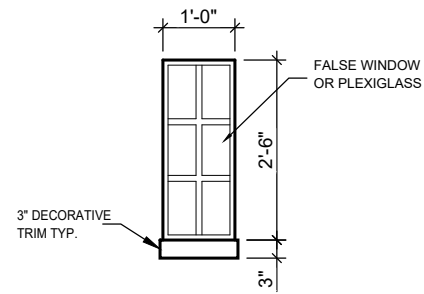
PLAN



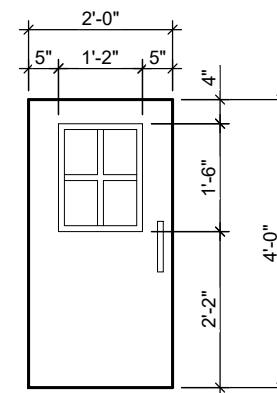
ROOF PLAN



SECTION



WINDOW SECTION
(SCALE 3/8" = 1'-0")



DOOR STYLE
(SCALE 3/8" = 1'-0")

NOTE

THIS PLAN CONTAINS ALL DIMENSIONS AND INFORMATION TO BUILD FOR MATERIALS NOTED. ANY CHANGES TO THIS PLAN MUST BE APPROVED BY THE ORIGINAL DESIGNER. ANY CHANGES TO THIS PLAN MUST BE APPROVED BY THE ORIGINAL DESIGNER. ANY CHANGES TO THIS PLAN MUST BE APPROVED BY THE ORIGINAL DESIGNER.

LA CONSTRUCTION DE CE TYPE DE MAISONNETTE DOIT ÊTRE RÉVISÉE PAR UN CONCEPTEUR QUALIFIÉ EN MATIÈRE DE CONSTRUCTION. TOUTES LES MODIFICATIONS À CE PLAN DOIVENT ÊTRE APPROUVÉES PAR LE CONCEPTEUR ORIGINAL.

FOR ALL INFORMATION, VISIT DRUMMONDHOUSEPLANS.COM. THIS PLAN DOES NOT INCLUDE THE LICENSE FOR REPRODUCTION OR DISTRIBUTION. THE PURCHASE OF A PLAYHOUSE PLAN DOES NOT INCLUDE THE LICENSE FOR REPRODUCTION OR DISTRIBUTION. THE PURCHASE OF A PLAYHOUSE PLAN DOES NOT INCLUDE THE LICENSE FOR REPRODUCTION OR DISTRIBUTION.



CUSTOMER INFO

PROJECT INFO

PLAYHOUSE

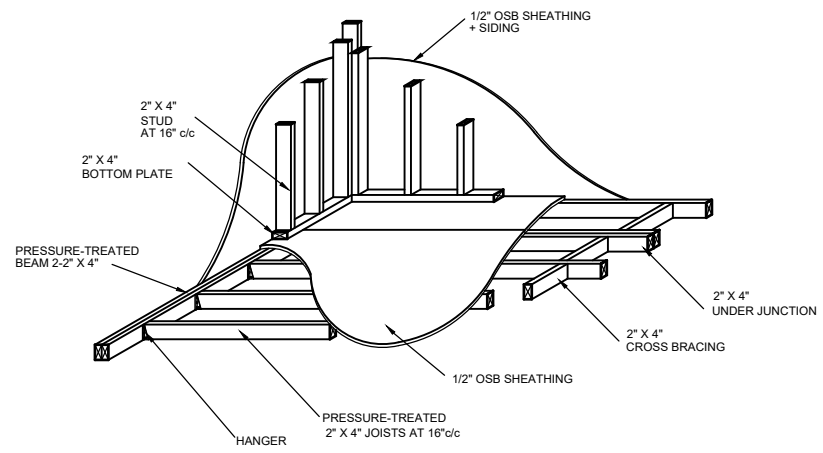
DRAWING

ELEVATIONS AND FLOORS

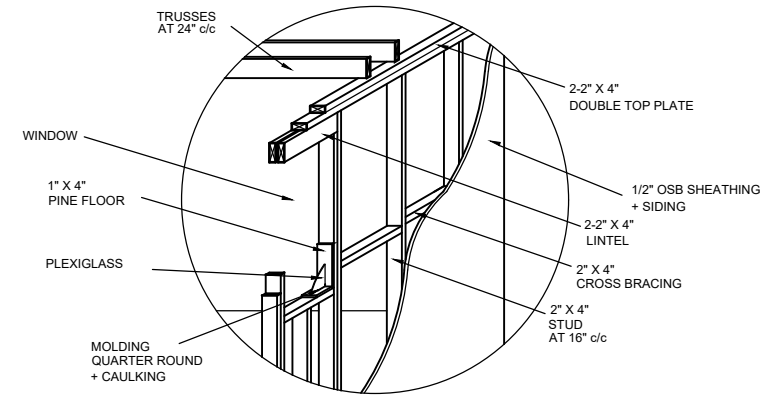
SCALE	3/16"=1'-0"	CHECKED BY	M.S.
DATE	06/06/2024	DRAWN BY	M.S.
PLAN NO.	9980	DESIGNED BY	D.C.

SHEET NO. 1-2

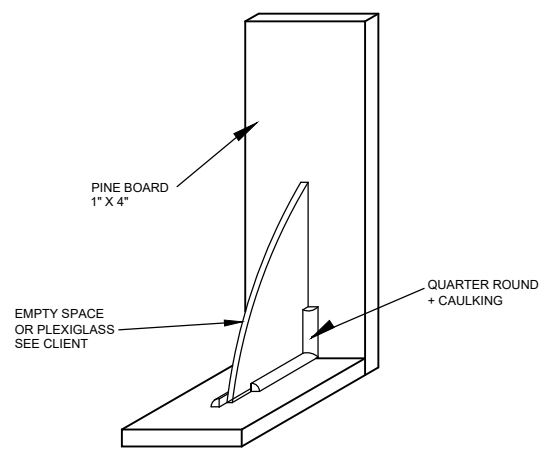
DRUMMONDHOUSEPLANS.COM ALL RIGHTS RESERVED



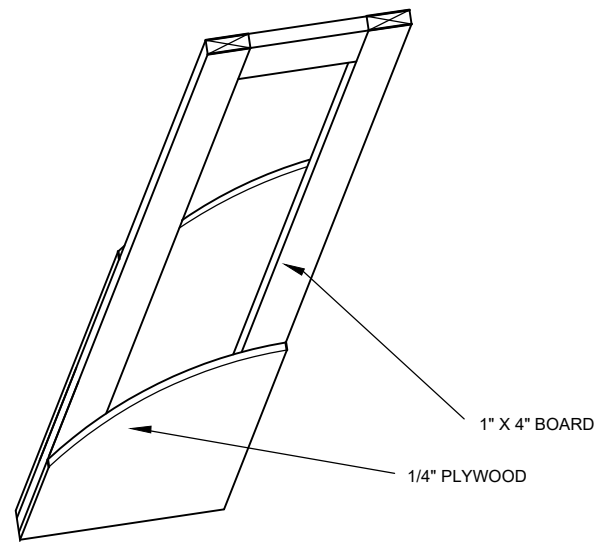
COLUMN SECTION
(NO SCALE)



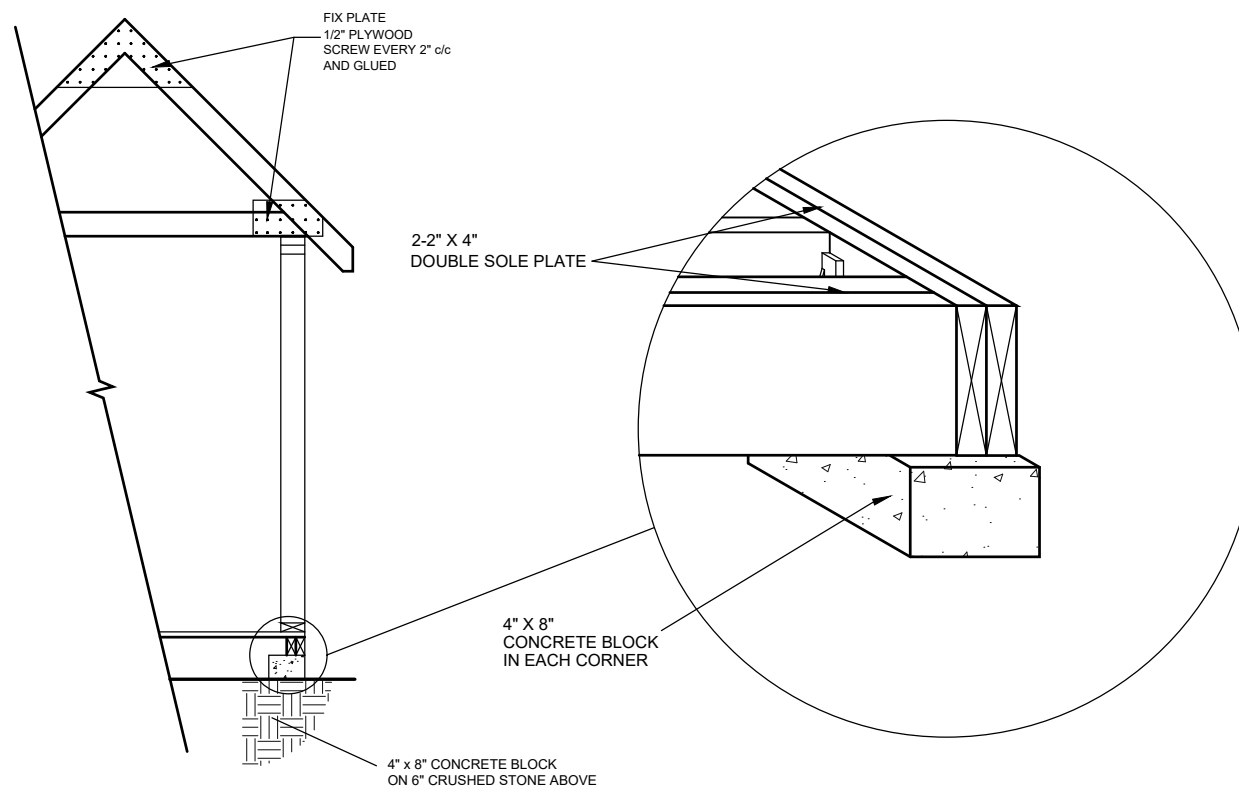
OPENING SECTION
(WITHOUT SCALE)



WINDOW SECTION
NO SCALE



DOOR SECTION
NO SCALE



ASSEMBLY DETAIL
NO SCALE

NOTE

THIS PLAN CONTAINS ALL DIMENSIONS AND DIRECTIONS TO BUILD FOR MATERIALS NEARLY AS AVAILABLE. IT IS YOUR RESPONSIBILITY TO VERIFY ALL DIMENSIONS AND DIRECTIONS BEFORE CONSTRUCTION. ANY CHANGES TO THIS PLAN WILL BE AT YOUR OWN RISK. THE LICENSEE OF THIS PLAN DOES NOT INCLUDE THE LICENSE FOR REPRODUCING OR TRANSMITTING IN ANY FORM OR BY ANY MEANS, ELECTRONIC OR MECHANICAL, INCLUDING PHOTOCOPYING, RECORDING, OR BY ANY INFORMATION STORAGE AND RETRIEVAL SYSTEM, WITHOUT PERMISSION IN WRITING FROM DRUMMOND HOUSE PLANS. LA CONSTRUCTION DE CE TYPE DE MAISONNETTE PEUT EXIGER DES CORRECTIONS ET DES MODIFICATIONS. VOUS ÊTES RESPONSABLE DE VÉRIFIER TOUS LES DIMENSIONS ET LES DIRECTIONS AVANT LA CONSTRUCTION. TOUTES LES MODIFICATIONS À CE PLAN SONT À VOS PROPRES RISQUES. LE TIEN DE CE PLAN NE COMPREND PAS LA LICENCE POUR REPRODUIRE OU TRANSMETTRE, EN QUELQUE MANNIÈRE QUE CE SOIT, EN ÉLECTRONIQUE OU MÉCANIQUE, Y COMPRIS LA PHOTOCOPIE, L'ENREGISTREMENT, OU PAR N'IMPORTE QUEL SYSTÈME DE STOCKAGE ET DE RÉTRIBUTION D'INFORMATION, SANS LA PERMISSE ÉCRITE DE DRUMMOND HOUSE PLANS.



DRUMMOND HOUSEPLANS.COM ALL RIGHTS RESERVED

CUSTOMER INFO

PROJECT INFO

PLAYHOUSE

DRAWING

SECTIONS AND DETAILS

SCALE	3/16"=1'-0"	CHECKED BY	M.S.
DATE	06/06/2024	DRAWN BY	M.S.
PLAN NO.	9980	DESIGNED BY	D.C.
SHEET NO.	2-2		

<u>QTY</u>		<u>DESCRIPTION</u>	MMS #
		<u>Floor Framing (Treated)</u>	
4	EA	4"x8" Concrete Blocks	139259
3	EA	2x4x12' Rim / Joists	144646
2	EA	2x4x8' Rim	144644
1	EA	2x4x8' Blocking	144644
1	EA	1/2"x4'x8' OSB Sheathing	113808
4	EA	2x4 Single Joist Hangers	295813
		<u>Wall Framing</u>	
4	EA	2x4x8' Plates / Blocking	114624
4	EA	2x4x12' Plates / Blocking	114626
14	EA	2x4x10' Studs	114625
2	EA	2x4x10' Lintels	114625
2	EA	2x4x12' Cripples / Jacks	114626
5	EA	1/2"x4'x8' OSB Sheathing	113808
17	SQ.FT	Maibec Acenta Stone Veneer Charcoal	S/O
63	SQ.FT	Maibec Canoxel Siding Grey	S/O
		<u>Window Framing</u>	
2	EA	1x4x8'	145012
4	EA	1/4 Round Trim x 8'	113965
1	EA	1x3x8' Below Window Trim	145010
2	EA	1x2x8' Grill (Ripped in half)	145008
2	EA	10"x28" Plexiglass	S/O
		<u>Door Framing</u>	
2	EA	1x4x8'	145012
2	EA	1/4" Round Trim x 8'	113965
1	EA	1x2x8' Grill (Ripped in half)	145008
1	EA	18"x18" Plexiglass	S/O
1	EA	Rona Taymor Door Knocker	111613
		<u>Roof Framing Material</u>	
5	EA	2x4x12' Rafter / Hip / Ceiling Joists	114626
4	EA	1/2"x4x8' Plywood Sheathing & Gussets	113776
2	EA	1x4x12' Fascia	114664
2	EA	Mystique Barkwood Shingles	283338
1	EA	Dakota Barkwood Shingles	283326
0,5	ROLL	Roofing Felt Paper	113883
3	EA	Alum Metal Shingle Starter x 10' White	132784
3	EA	4" Fascia Finish x 10'	132781
14	PCS	Roof Flashing at Chimney	132855
3	PCS	4" Wide Soffit Strip	108859
		<u>Chimney Framing</u>	
3	EA	2x4x8' Framing	114624
1	EA	1/2"x4x8' OSB Sheathing	113808
5	SQ.FT	Maibec Canoxel Siding Grey	S/O
1	LF	24" White Alum Flatstock	132779

(For Exact Colors & Styles Refer To Moodboard)
(Hardware & Caulking To Be Verified)

